

Ryan White Part A funded Care Coordination, Medicaid Health Homes and Payer of Last Resort

Figure 1 is a basic description of the three possible care coordination service delivery models that will be available to each eligible client population seeking services from a NY EMA Ryan White Care Coordination Program or a NYS Medicaid Health Home. As the Health Home program evolves, the New York EMA will continue to monitor the Health Home services to ensure that Ryan White remains payer of last resort and that PLWHA continue to receive necessary and appropriate care.

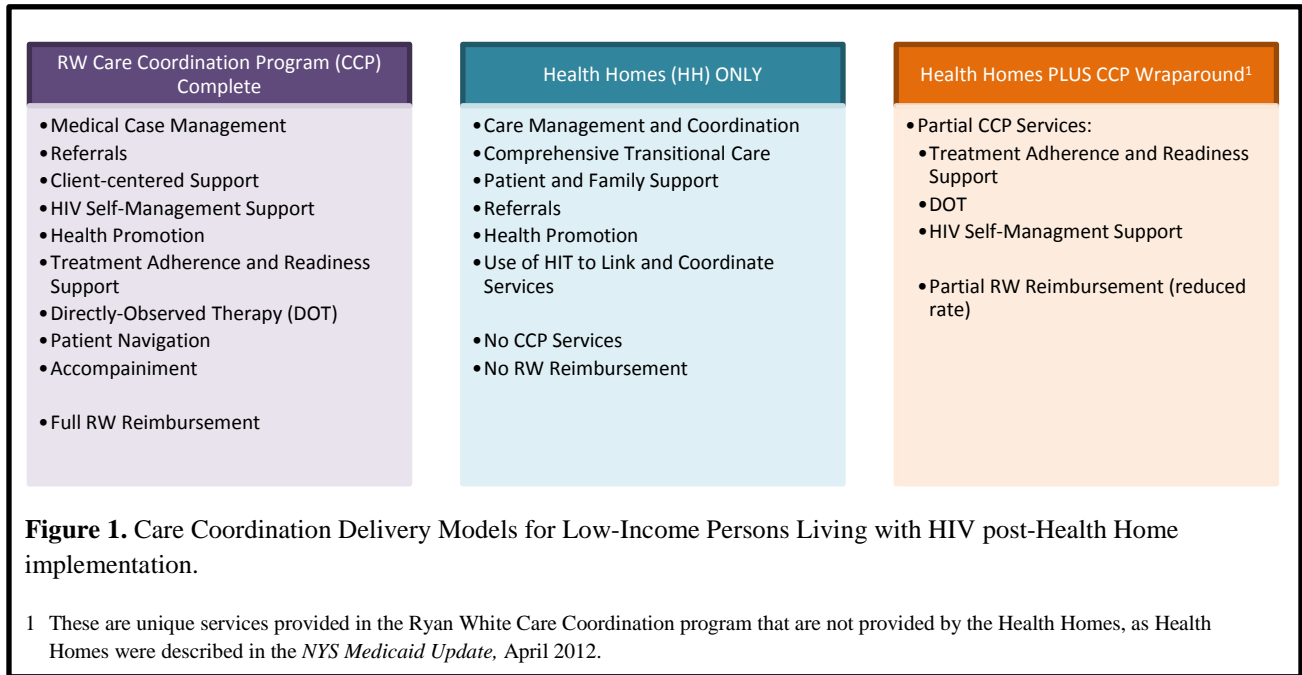


Figure 2 on the next page illustrates the pathway for determining which clients are eligible for which service delivery model.

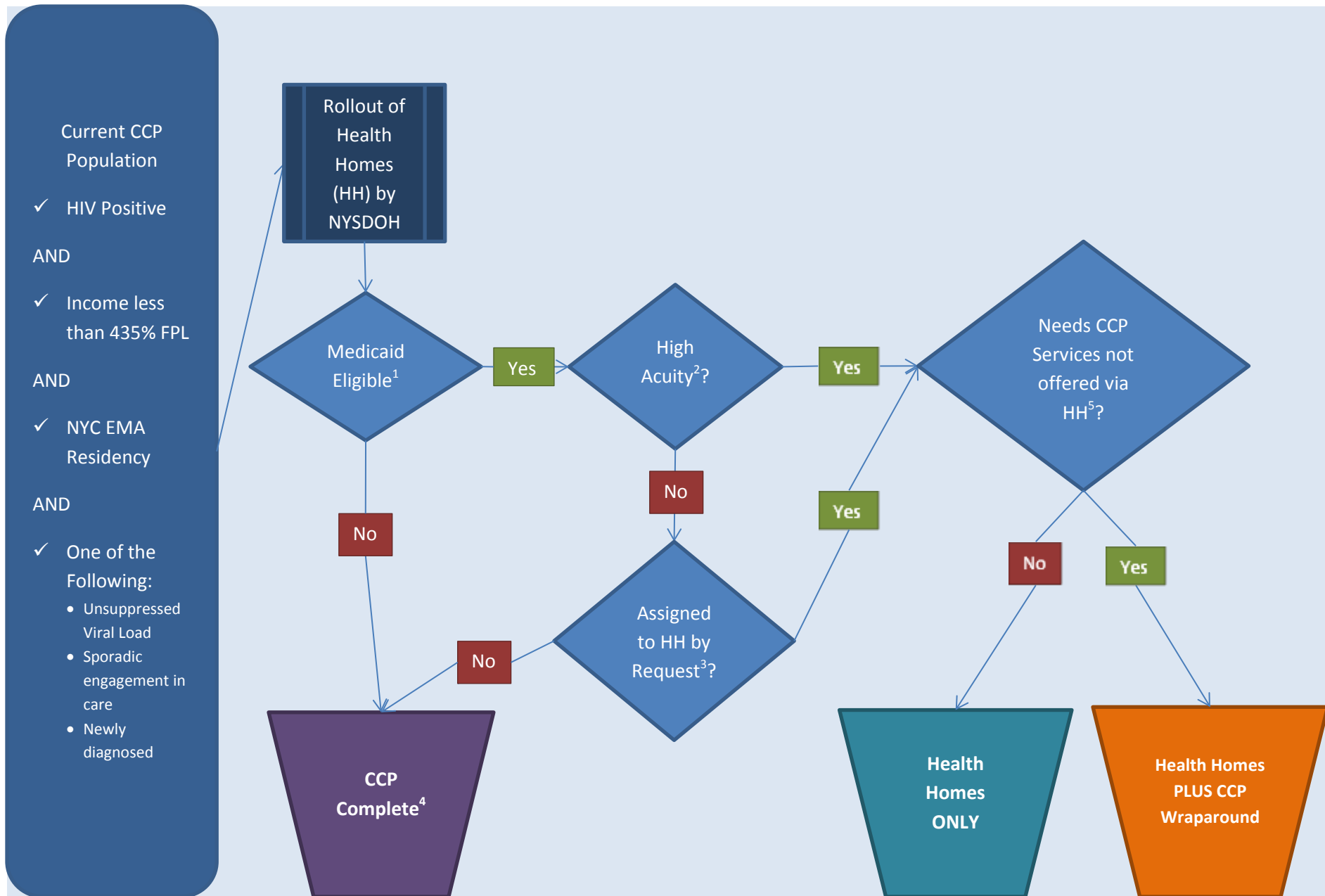


Figure 2. Determining Appropriate Care Coordination Service Delivery Model for Clients post-Medicaid Expansion

Key:

1. Those who are not eligible for Medicaid include persons with household income over 138% FPL and those with undocumented immigration status.

2. NY State DOH will assign acuity levels. Currently, Health Homes are available to those classified as High Acuity.

3. In addition to those not classified as High Acuity, clients may be assigned to a Health Home at the request of the MCO.

4. Currently, two populations are eligible for the full Care Coordination Program: (1) those who are not eligible for Medicaid and (2) those who have not been classified as High Acuity by Medicaid and have not been assigned to a Health Home by MCO request.

5. CCP Services not offered in the Health Homes will be available as CCP Wraparound services. Individuals who are assigned to a Medicaid Health Home and decline enrollment may also access non-Medicaid billable services in the Care Coordination Program.